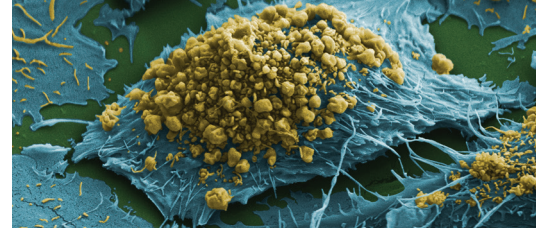
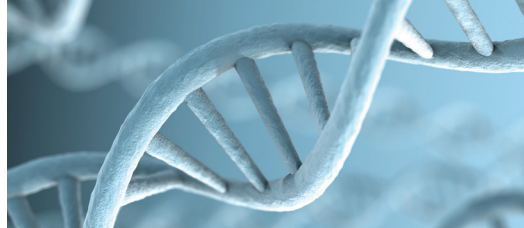


THE ESSENTIALS OF  
LIFE SCIENCE RESEARCH  
GLOBALLY DELIVERED™



## PCR-BASED MYCOPLASMA DETECTION SERVICE

Mycoplasma contamination is a long-standing problem that can lead to erroneous data, misinterpreted results, and extensive costs. The best protection against these bacteria is to quickly identify contaminated cultures and reagents through routine testing.

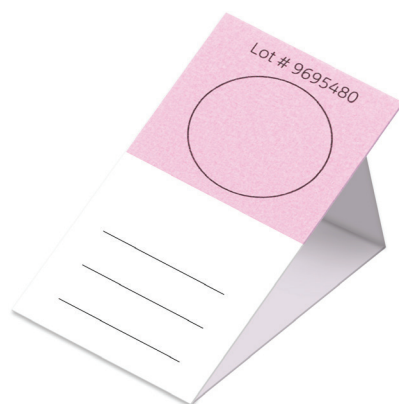
To meet this need, ATCC has developed a PCR-based mycoplasma detection service (ATCC® 136-XV™) that combines easy-to-use Whatman™ FTA™ sample collection cards with ATCC's best-selling Universal Mycoplasma Detection Kit (ATCC® 30-1012K™). This kit can quickly and reliably identify over 60 species of *Mycoplasma*, *Acholeplasma*, *Spiroplasma*, and *Ureaplasma*, including the top eight species most likely to affect cell cultures: *M. arginini*, *M. fermentans*, *M. hominis*, *M. hyorhina*, *M. orale*, *M. pirum*, *M. salivarium*, and *A. laidlawii*.

Your research, time, and funding are too important to lose. Ensure the quality of your cell cultures today!

Save big on  
multi-card orders!

**ATCC® 136-XV™**

FTA Sample Collection Kit for PCR-  
based Mycoplasma Detection Service



### ATCC PROVIDES:

- ✓ A convenient FTA™ sample collection card for spotting samples
- ✓ Rapid and accurate mycoplasma detection
- ✓ ISO/IEC 17025: 2005 certified

Results within 3-5 business days!

### GET YOUR DATA IN 3 EASY STEPS:

- 1 Place your order for the service
- 2 Spot your cells onto the supplied sample collection card
- 3 Mail the dried card to ATCC in a pre-addressed envelope

Visit us online at

[www.atcc.org/MycoplasmaService](http://www.atcc.org/MycoplasmaService)

to learn more about the mycoplasma detection service and to place your order.

P 800.638.6597  
703.365.2700

E [SalesRep@atcc.org](mailto:SalesRep@atcc.org)  
[www.atcc.org](http://www.atcc.org)

PCR-03-2018-01

© 2018 American Type Culture Collection. The ATCC trademark and trade name, and any other trademarks listed in this publication are trademarks owned by the American Type Culture Collection unless indicated otherwise. Whatman and FTA are trademarks of General Electric Company. Lung cancer image credited to Anne Weston, LRI, CRUK

These products are for laboratory use only. Not for human or diagnostic use. ATCC products may not be resold, modified for resale, used to provide commercial services or to manufacture commercial products without prior ATCC written approval.

ATCC® The essentials of life science research. Globally delivered.™ 10801 University Boulevard, Manassas, VA 20110