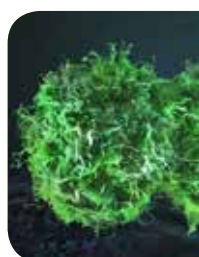


THE ESSENTIALS OF
LIFE SCIENCE RESEARCH
GLOBALLY DELIVERED™



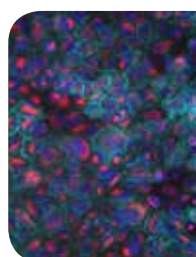
CANCER RESOURCES

ATCC has been supporting cancer research for over 50 years. We currently provide over 4,000 fully characterized cell lines and novel cell-based models to support the global cancer research community in understanding how cancer manifests itself and discovering effective treatment options. ATCC Cancer Resources include:



CRISPR/Cas9-Gene Edited Isogenic Cell Lines

EML4-ALK Fusion A549 Isogenic Cell Line
NRAS Mutant A375 Isogenic Cell Line
KRAS Mutant A375 Isogenic Cell Line
IDH1 Mutant Isogenic Cell Line
IDH2 Mutant Isogenic Cell Line
www.atcc.org/isogenic



Epithelial-mesenchymal Transition (EMT) Reporter Cell Line

CRISPR/Cas9 gene-edited
Vimentin-RFP fusion protein
Strong RFP signal upon EMT induction
Sensitive to EMT inhibitors
www.atcc.org/EMT



Tumor Cell Panels

Tumor Panels by Genetic Alteration
Tumor Panels by Tissue Type
p53 Hotspot Mutation Cell Panels
www.atcc.org/tcp



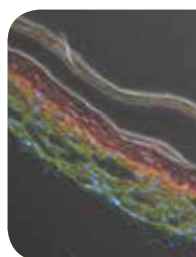
Angiogenesis Resources

Angio-Ready™ Angiogenesis Assay System
Primary Endothelial and Smooth Muscle Cells
Cardiovascular Cell Lines
CellMatrix Basement Membrane Gel
www.atcc.org/angio



Cell Health & Viability

MTT and XTT Assays
Reliablue™ Cell Viability Assay
Mycoplasma Detection Kit
CoolCell® LX Alcohol-free Cryopreservation Container
www.atcc.org/cellhealth



Complete Primary Cell Solutions

Human Airway, Renal, Epidermal, Mammary, and More
Complete Growth Media and Supplements
hTERT-immortalized Primary Cells
www.atcc.org/primarycells



Cell Line Genomic DNA

Quantitative DNA
Highly Purified DNA
Certified Reference Material DNA
www.atcc.org/celldna



Custom Solutions

Custom Services
Custom Cell Production and Manufacturing
Cell Line Development
Cell Line Authentication
Biorepository ServicesSM
www.atcc.org/services

ANGIO-READY™, A TOOL FOR HIGH-THROUGHPUT ANGIOGENESIS STUDIES

Angio-Ready™ was engineered at ATCC to provide researchers with an assay-ready kit to measure the growth of new blood vessels¹.

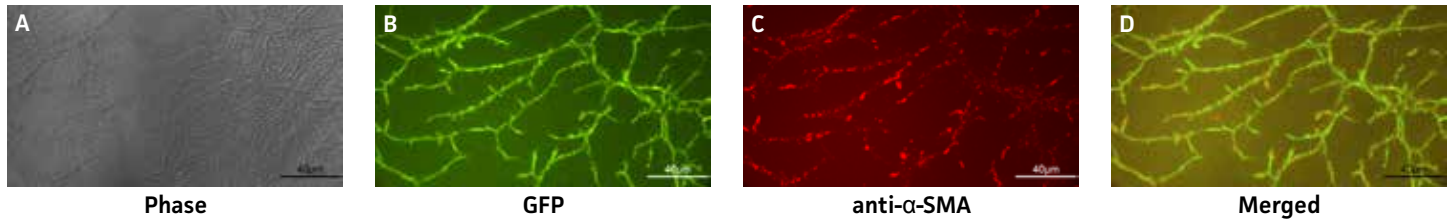


Figure 1. Establishment of TeloHAEC-GFP and hTERT-MSC co-culture angiogenesis. TeloHAEC-GFPs co-cultured with hTERT-MSCs for 7 days in the optimized angiogenesis medium displayed A) 3D tubule structures and B) a long branching organization C) that exhibited immuno-reactivity to an α -SMA antibody, which D) co-localized with the TeloHAEC-GFP.

ISOGENIC CELL LINES

Clinically relevant cell models are critical for studies of molecular and cellular mechanisms of tumors, as well as for drug screening for cancer. With genome editing tools such as CRISPR/Cas9, ATCC has created isogenic cell lines with mutants of key oncogenes, such as EML4-ALK fusion and NRAS mutation. These cell lines are ideal for identifying novel, personalized treatment regimens².

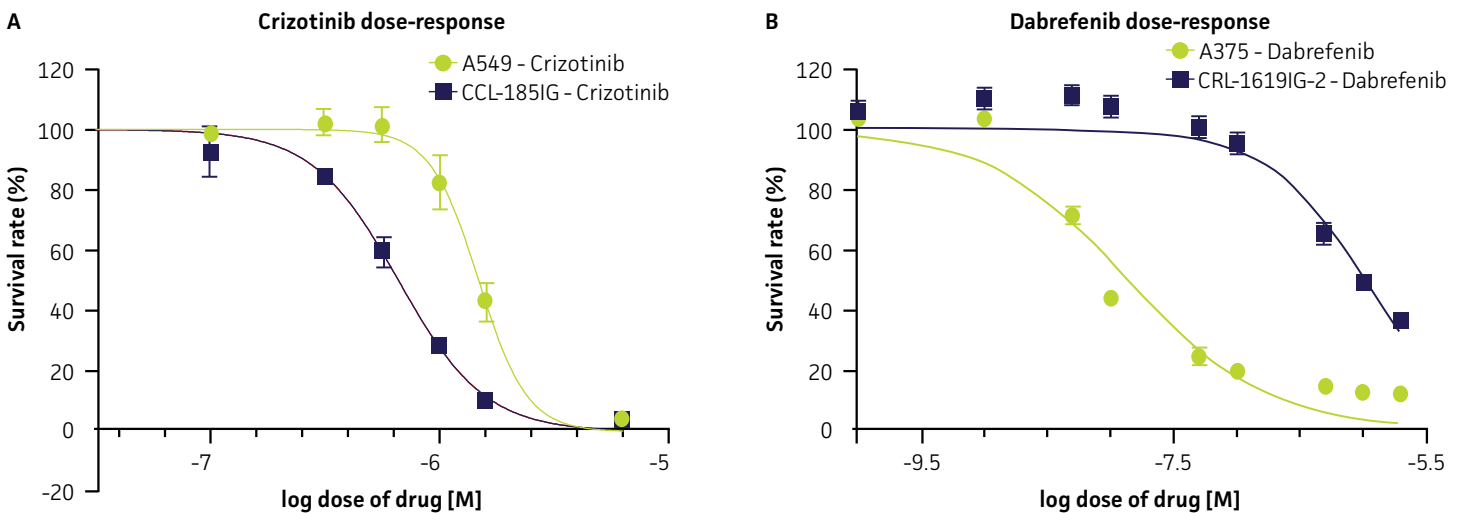


Figure 2. Figure 2. (A) EML4-ALK Fusion-A549 Isogenic Cell Line (ATCC® CCL-185IG™) is sensitive to ALK signaling pathway inhibition. A549 (ATCC® CCL-185™) and CCL-185IG cells were treated with the indicated concentrations of ALK inhibitor crizotinib and cell survival was determined via live cell analysis. (B) NRAS Q61K Mutant A375 Isogenic Cell Line (ATCC® CRL-1619IG-2™) is resistant to BRAF signaling pathway inhibition. A357 (ATCC® CRL-1619™) and CRL-1619IG-2 cells were treated with the indicated concentrations of BRAF inhibitor dabrefenib and cell survival was determined as in A).

REFERENCES

1. Zou C, Shapiro BS. *In vitro* Angiogenesis Assay Using the ATCC® Angio-Ready™ System. Application Note Number 19, 2016.
2. Enuameh, MS, et al. The generation of an EML4-ALK fusion NSCLC isogenic cell line relevant for drug discovery and development. Application Note Number 25, 2016.



10801 University Blvd.
Manassas, VA 20110

CR-817-02

© 2017 American Type Culture Collection. The ATCC trademark and trade name, and any other trademarks listed in this publication are trademarks owned by the American Type Culture Collection unless indicated otherwise.

These products are for laboratory use only. Not for human or diagnostic use. ATCC products may not be resold, modified for resale, used to provide commercial services or to manufacture commercial products without prior ATCC written approval.

PHONE

800.638.6597
703.365.2700

EMAIL

SalesRep@atcc.org

WEB

www.atcc.org