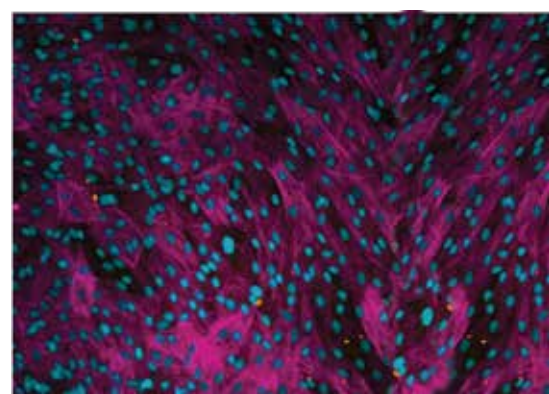
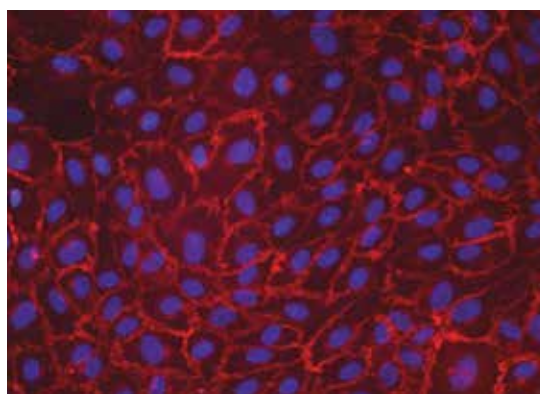
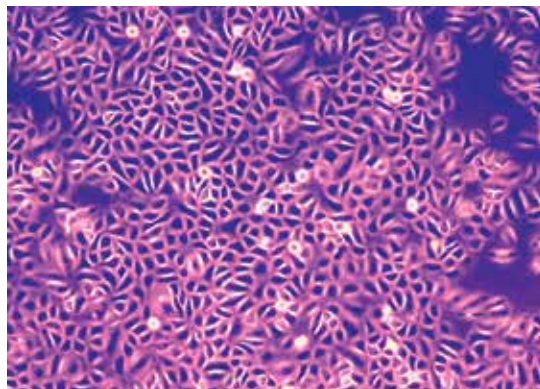


Primary Cell Solutions[®]



Primary cell cultures closely mimic the physiological state of cells *in vivo* and generate relevant data representing living organisms.

ATCC Primary Cell Solutions is a system of matched components designed to boost growth, maximize functionality, and maintain normal morphology for each primary cell type. The combination of an optimized basal medium and cell-specific growth kits is a crucial element in the ATCC Primary Cell Solutions product line. Each set is designed to eliminate the guesswork involved with finding just the right complement of growth factors to support and promote cell proliferation and the expression of relevant biomarkers for each cell type - a complete lab tested “solution” to your primary cell culture needs.

ATCC Primary Cells are well characterized, having undergone tests for sterility and viability. In addition, primary cells are subjected to consistent isolation and processing, which minimizes the variation between individual tubes as well as lots. Also, ATCC Technical Services can provide additional donor information to aid in selecting the most relevant primary cell lots to guarantee the optimal outcome for your experiments.

ATCC Primary Cell Solutions basal media have been quality tested with each respective cell type to ensure that the vital needs of the individual culture are consistently met. The basal media are sterile, phenol red-free, liquid tissue culture media intended for use as one component in a complete system. Supplementation of the basal media with an ATCC Primary Cell Solutions growth kit is essential in creating an optimal growth environment for cellular response.

Primary Cells, Supporting Media, and Growth Kits

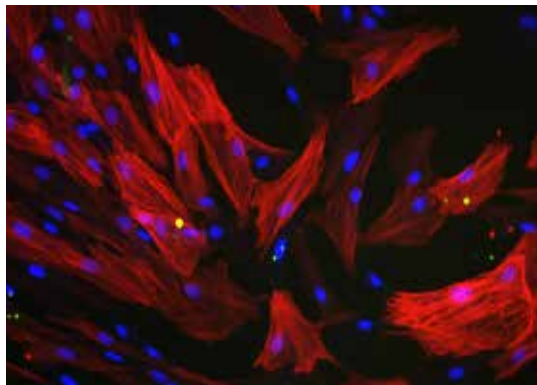
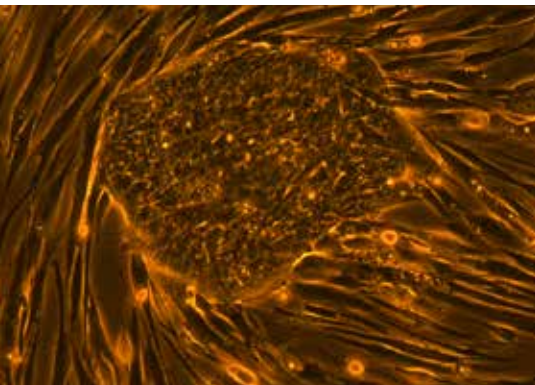
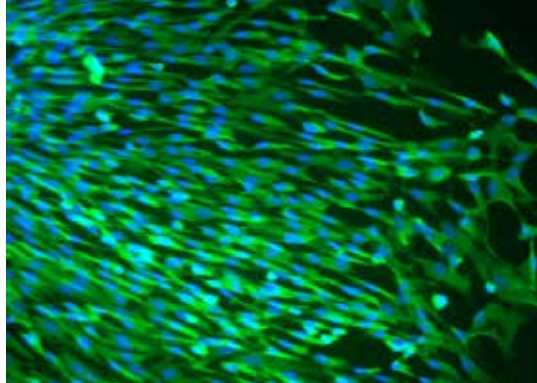
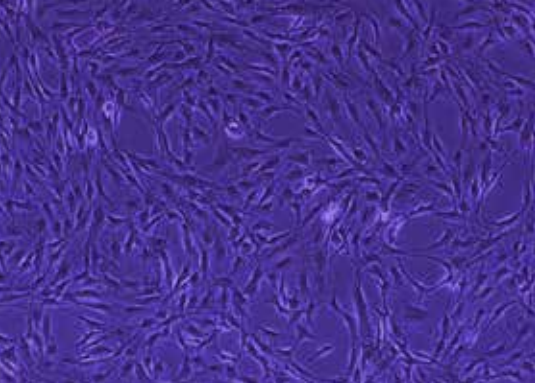
The table below is organized by cell type and includes the number of cells that are contained in each vial of primary cells. Also in the table, the product numbers of matched basal media and growth kits are provided for ease of ordering as well as to ensure the optimal growth and performance of your primary cells.

Cell Type	Product Name	ATCC® No.	Number of Cells/vial	Growth Kit	Basal Media
Endothelial Cells	Aortic Endothelial Cells	PCS-100-011™	500,000	Endothelial Cell Growth Kit-BBE (ATCC® No. PCS-100-040™) or Endothelial Cell Growth Kit-VEGF (ATCC® No. PCS-100-041™)	Vascular Cell Basal Medium (ATCC® No. PCS-100-030™)
	Coronary Artery Endothelial Cells	PCS-100-020™	500,000		
	Umbilical Vein Endothelial Cells	PCS-100-010™	500,000		
	Umbilical Vein Endothelial Cells; Pooled	PCS-100-013™	500,000		
	Dermal Microvascular Endothelial Cells; Neonatal	PCS-110-010™	500,000	Microvascular Endothelial Cell Growth Kit-BBE (ATCC® No. PCS-110-040™) or Microvascular Endothelial Cell Growth Kit-VEGF (ATCC® No. PCS-110-041™)	
	Pulmonary Artery Endothelial Cells	PCS-100-022™	500,000		
Smooth Muscle Cells	Aortic Smooth Muscle Cells	PCS-100-012™	500,000	Vascular Smooth Muscle Cell Growth Kit (ATCC® PCS-100-042™)	Vascular Cell Basal Medium (ATCC® No. PCS-100-030™)
	Bladder Smooth Muscle Cells	PCS-420-012™	500,000		
	Bronchial/Tracheal Smooth Muscle Cells	PCS-130-011™	500,000		
	Coronary Artery Smooth Muscle Cells	PCS-100-021™	500,000		
	Lung Smooth Muscle Cells	PCS-130-010™	500,000		
	Pulmonary Artery Smooth Muscle Cells	PCS-100-023™	500,000		
	Uterine Smooth Muscle Cells	PCS-460-011™	500,000		
Epithelial Cells	Bladder Epithelial Cells (A/T/N)	PCS-420-010™	500,000	Corneal Epithelial Growth Kit (ATCC® No. PCS-700-040™)	Prostate Epithelial Basal Medium (ATCC® No. PCS-440-030™)
	Bronchial/Tracheal Epithelial Cells	PCS-300-010™	500,000	Bronchial Epithelial Cell Growth kit (ATCC® No. PCS-300-040™)	Airway Epithelial Cell Basal Medium (ATCC® No. PCS-300-030™)
	Small Airway Epithelial Cells	PCS-301-010™	500,000		
	Corneal Epithelial Cells	PCS-700-010™	500,000	Corneal Epithelial Growth Kit (ATCC® No. PCS-700-040™)	Corneal Epithelial Cell Basal Medium (ATCC® No. PCS-700-030™)
	Mammary Epithelial Cells	PCS-600-010™	500,000	Mammary Epithelial Cell Growth Kit (ATCC® No. PCS-600-040™)	Mammary Epithelial Cell Medium (ATCC® No. PCS-600-030™)
	Prostate Epithelial Cells	PCS-440-010™	500,000	Prostate Epithelial Cell Growth Kit (ATCC® No. PCS-440-040™)	Prostate Epithelial Basal Medium (ATCC® No. PCS-440-030™)
	Renal Cortical Epithelial Cells	PCS-400-011™	500,000	Renal Epithelial Cell Growth Kit (ATCC® No. PCS-400-040™)	Renal Epithelial Cell Basal Medium (ATCC® No. PCS-400-030™)
	Renal Mixed Epithelial Cells	PCS-400-012™	500,000		
	Renal Proximal Tubule Epithelial Cells	PCS-400-010™	500,000		

Cell Type	Product Name	ATCC® No.	Number of Cells/vial	Growth Kit	Basal Media
Fibroblasts	Bladder Fibroblast Cells	PCS-420-013™	500,000	Fibroblast Growth Kit-Low serum (ATCC® No. PCS-201-041™)	Fibroblast Basal Medium (ATCC® No. PCS-201-030™)
	Dermal Fibroblasts; Adult	PCS-201-012™	500,000	Fibroblast Growth Kit, Serum-free (ATCC® No. PCS-201-040™) or Fibroblast Growth Kit, Low Serum (ATCC® No. PCS-201-041™)	
	Dermal Fibroblasts; Neonatal	PCS-201-010™	500,000		
	Dermal Fibroblasts; Neonatal, Mitomycin C-treated	PCS-201-011™	3 million	Fibroblast Growth Kit-Low serum (ATCC® No. PCS-201-041™)	
	Gingival Fibroblast	PCS-201-018™	500,000	Fibroblast Growth Kit-Low serum (ATCC® No. PCS-201-041™)	
	Uterine Fibroblasts	PCS-460-010™	500,000		
Blood and Marrow Cells	Bone Marrow CD34+ Cells	PCS-800-012™	500,000	Application-specific*	
	Bone Marrow Mononuclear Cells	PCS-800-013™	25 million		
	Cord Blood CD34+ Cells	PCS-800-014™	500,000		
	Peripheral Blood CD14+ Monocytes	PCS-800-010™	50 million		
	Peripheral Blood Mononuclear Cells (PBMC)	PCS-800-011™	25 million		
Keratinocytes	Epidermal Keratinocytes; Adult	PCS-200-011™	500,000	Keratinocyte Growth Kit (ATCC® No. PCS-200-040™)	Dermal Cell Basal Medium (ATCC® No. PCS-200-030™)
	Epidermal Keratinocytes; Neonatal Foreskin	PCS-200-010™	500,000		
	Gingival Keratinocytes	PCS-200-014™	500,000		
Melanocytes	Epidermal Melanocytes; Adult	PCS-200-013™	500,000	Melanocyte Growth Kit (ATCC® No. PCS-200-041™)	Dermal Cell Basal Medium (ATCC® No. PCS-200-030™)
	Epidermal Melanocytes; Neonatal Foreskin	PCS-200-012™	500,000	Adult Melanocyte Growth Kit (ATCC® No. PCS-200-042™)	
Mesenchymal Stem Cells	Adipose-derived Mesenchymal Stem Cells	PCS-500-011™	1 million	Mesenchymal Stem Cell Growth Kit (ATCC® No. PCS-500-040™)	Mesenchymal Stem Cell Basal Medium (ATCC® No. PCS-500-030™)
	Umbilical Cord-derived Mesenchymal Stem Cells	PCS-500-010™	500,000		
	Bone Marrow-derived Mesenchymal Stem Cells	PCS-500-012™	1 million	Mesenchymal Stem Cell Growth Kit for Bone Marrow MSCs (ATCC® No. PCS-500-041™)	
	Subcutaneous Preadipocytes	PCS-210-010™	1 million	Fibroblast Growth Kit, Low Serum (ATCC® No. PCS-201-401™)	Fibroblast Basal Medium (ATCC® No. PCS-201-030™)

*Blood and bone marrow cells have a limited lifespan in culture and should only be thawed immediately prior to their intended use. ATCC does not recommend maintaining blood and bone marrow cells in culture in the absence of application-specific growth factors.

See our online catalog at www.atcc.org/PCS for a full description of each item and to see an up-to-date listing. For a listing of primary cells immortalized by hTERT, visit www.atcc.org/hTERT.



See our online catalog at www.atcc.org/PCS for a full description of each item.

PC-1116-10

© 2016 American Type Culture Collection. The ATCC trademark and trade name, and any other trademarks listed in this publication are trademarks owned by the American Type Culture Collection unless indicated otherwise.

These products are for laboratory use only. Not for human or diagnostic use. ATCC products may not be resold, modified for resale, used to provide commercial services or to manufacture commercial products without prior ATCC written approval.

Tel 800.638.6597
703.365.2700
Fax 703.365.2750
Email SalesRep@atcc.org
Web www.atcc.org
Or contact your local distributor

